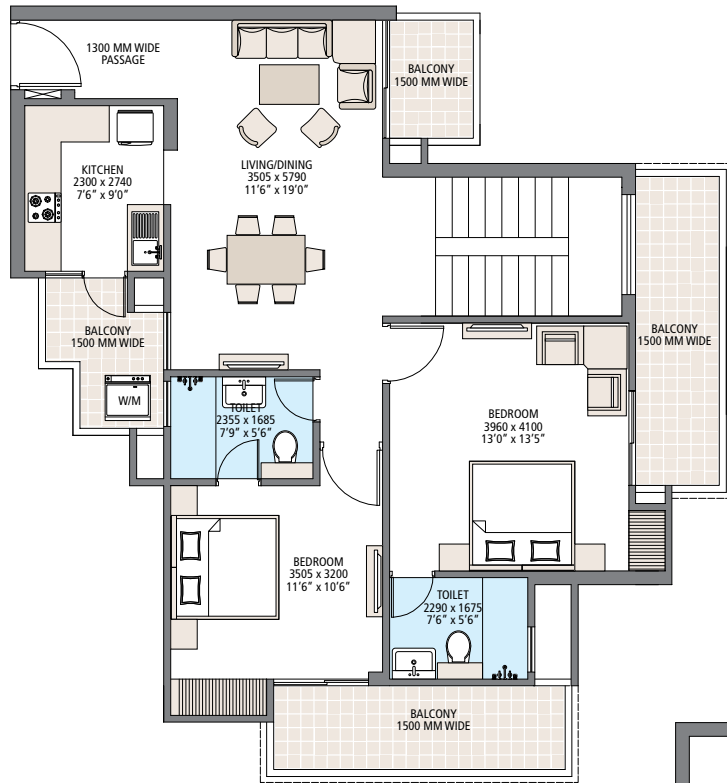


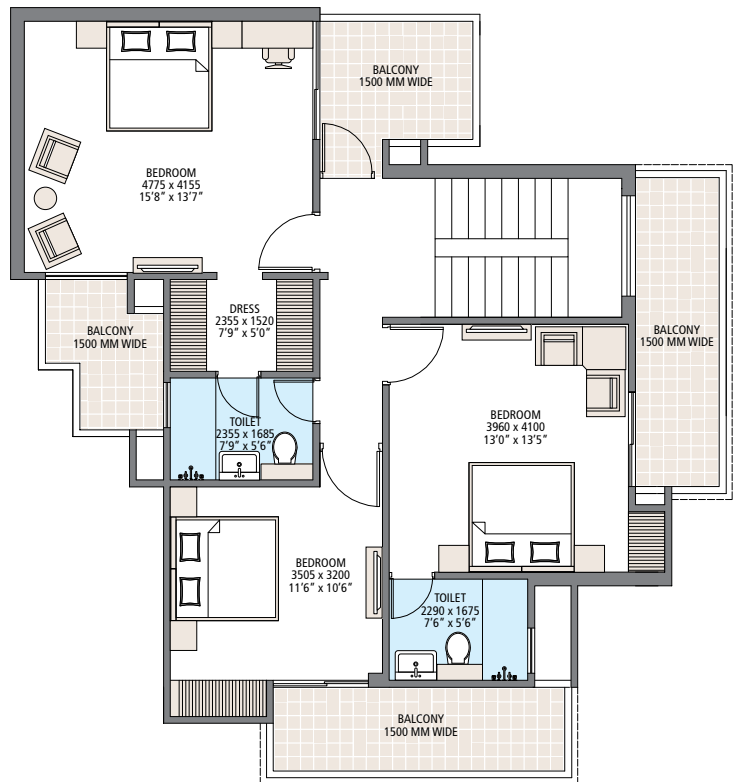
Floor Plan - Tower 1

Duplex Unit (1601 & 1602)

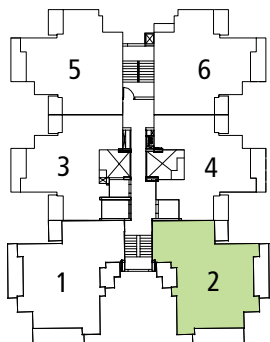
Carpet Area	879 Sq.Ft. + 837 Sq.Ft. = 1,705 Sq.Ft.
Built-up Area	938 Sq.Ft. + 907 Sq.Ft. = 1,845 Sq.Ft.
Balcony Area	248 Sq.Ft. + 215 Sq.Ft. = 463 Sq.Ft.
Extended Balcony	62 Sq.Ft.
Super Area	2,911 Sq.Ft.



Lower Level



Upper Level

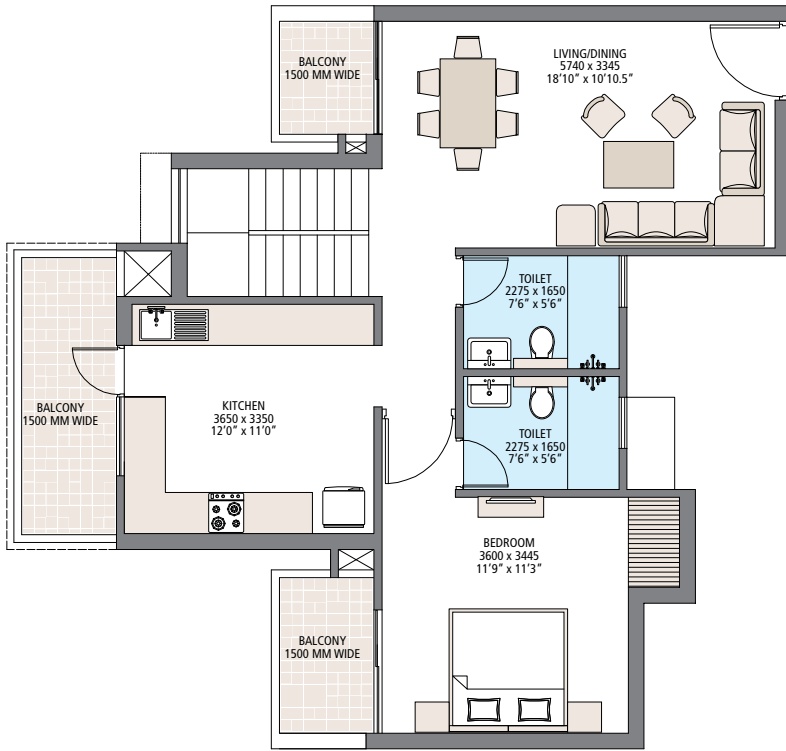


In the interest of maintaining high standards, all floor plans, layout plans, areas, dimensions and specifications are indicative and are subject to change as decided by the company or by any competent authority. Soft furnishing, cupboards, kitchen cabinets, furniture and gadgets are not part of the offering. 1 sq. metre = 1.196 sq. yard & 1 sq. metre = 10.76 sq. feet.

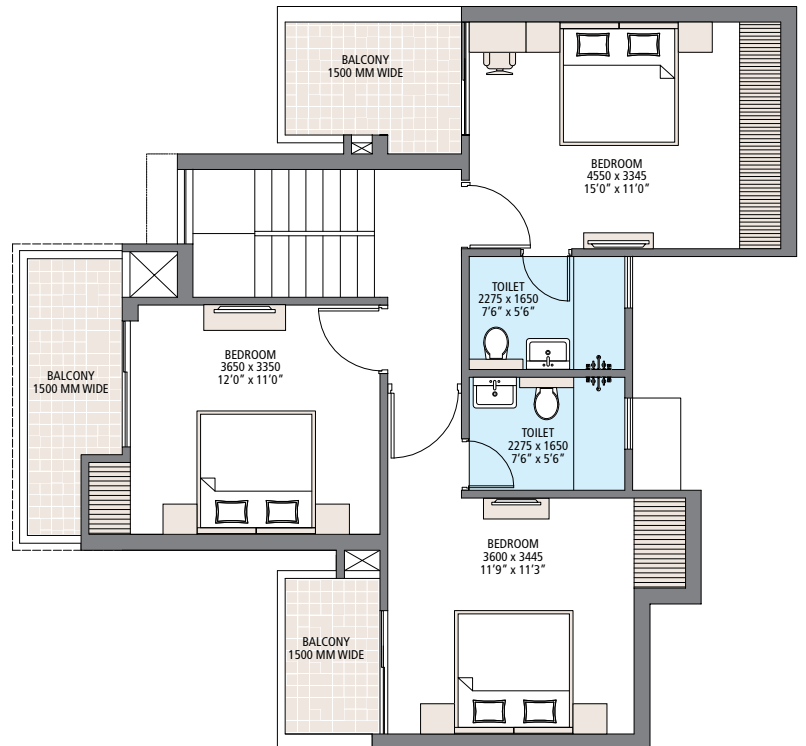
Floor Plan - Tower 1

Duplex Unit (1603)

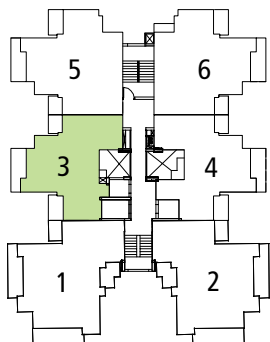
Carpet Area	687 Sq.Ft. + 660 Sq.Ft. = 1,345 Sq.Ft.
Built-up Area	761 Sq.Ft. + 731 Sq.Ft. = 1,492 Sq.Ft.
Balcony Area	134 Sq.Ft. + 108 Sq.Ft. = 242 Sq.Ft.
Extended Balcony	54 Sq.Ft.
Super Area	2,333 Sq.Ft.



Lower Level



Upper Level

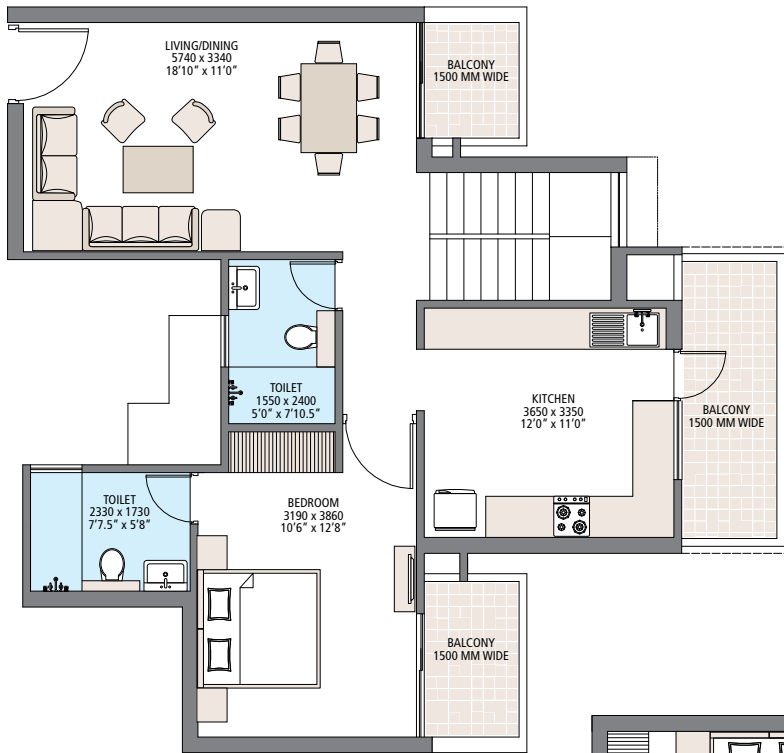


In the interest of maintaining high standards, all floor plans, layout plans, areas, dimensions and specifications are indicative and are subject to change as decided by the company or by any competent authority. Soft furnishing, cupboards, kitchen cabinets, furniture and gadgets are not part of the offering. 1 sq. metre = 1.196 sq. yard & 1 sq. metre = 10.76 sq. feet.

Floor Plan - Tower 1

Duplex Unit (1604)

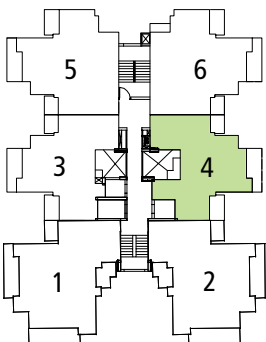
Carpet Area	680 Sq.Ft. + 653 Sq.Ft. = 1,345 Sq.Ft.
Built-up Area	761 Sq.Ft. + 732 Sq.Ft. = 1,493 Sq.Ft.
Balcony Area	134 Sq.Ft. + 108 Sq.Ft. = 242 Sq.Ft.
Extended Balcony	54 Sq.Ft.
Super Area	2,303 Sq.Ft.



Lower Level



Upper Level

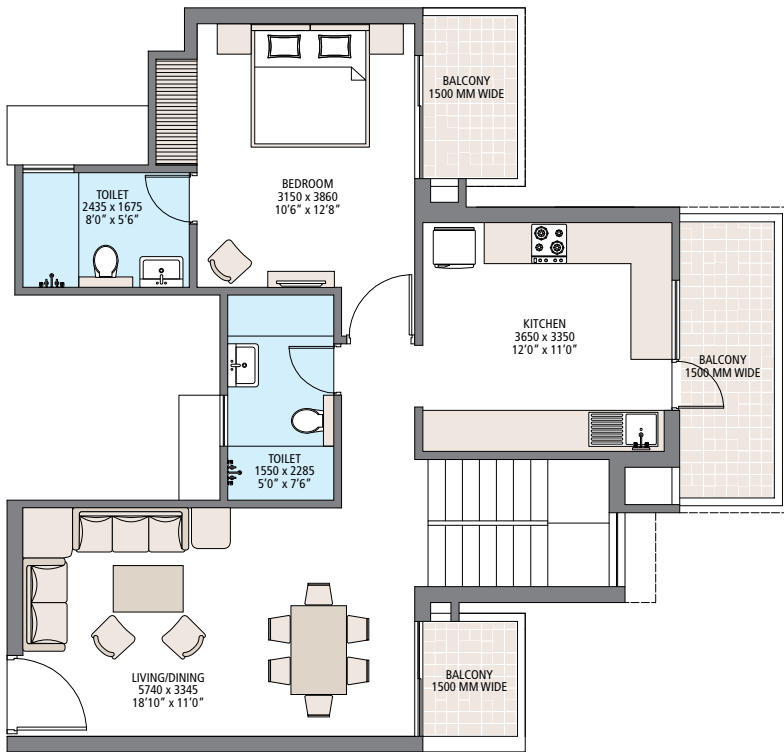


In the interest of maintaining high standards, all floor plans, layout plans, areas, dimensions and specifications are indicative and are subject to change as decided by the company or by any competent authority. Soft furnishing, cupboards, kitchen cabinets, furniture and gadgets are not part of the offering. 1 sq. metre = 1.196 sq. yard & 1 sq. metre = 10.76 sq. feet.

Floor Plan - Tower 1

Duplex Unit (1605 & 1606)

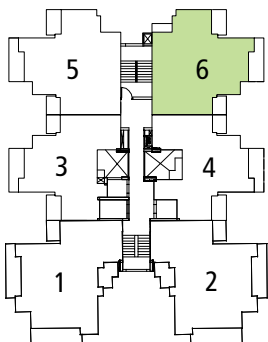
Carpet Area	691 Sq.Ft. + 665 Sq.Ft. = 1,356 Sq.Ft.
Built-up Area	779 Sq.Ft. + 750 Sq.Ft. = 1,528 Sq.Ft.
Balcony Area	135 Sq.Ft. + 108 Sq.Ft. = 243 Sq.Ft.
Extended Balcony	54 Sq.Ft.
Super Area	2,386 Sq.Ft.



Lower Level



Upper Level

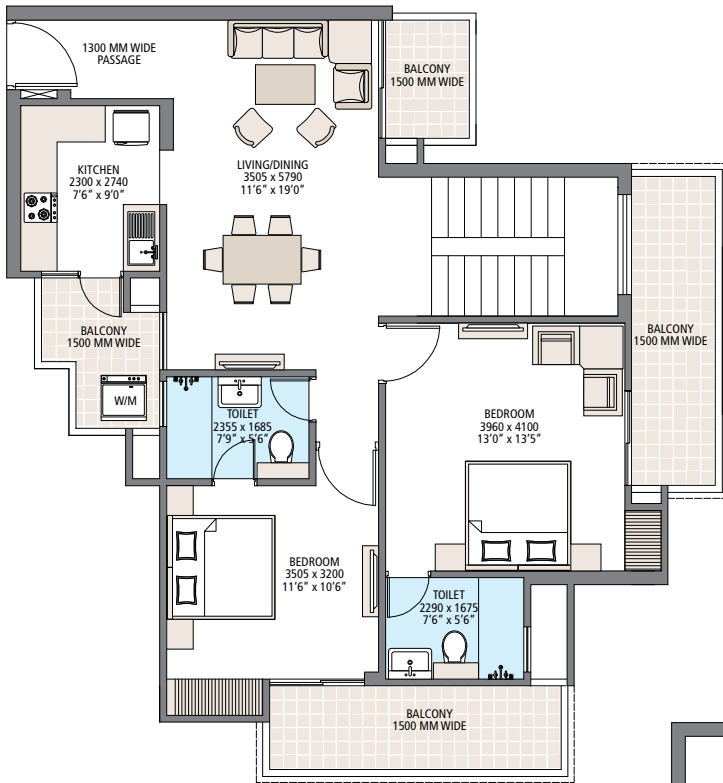


In the interest of maintaining high standards, all floor plans, layout plans, areas, dimensions and specifications are indicative and are subject to change as decided by the company or by any competent authority. Soft furnishing, cupboards, kitchen cabinets, furniture and gadgets are not part of the offering. 1 sq. metre = 1.196 sq. yard & 1 sq. metre = 10.76 sq. feet.

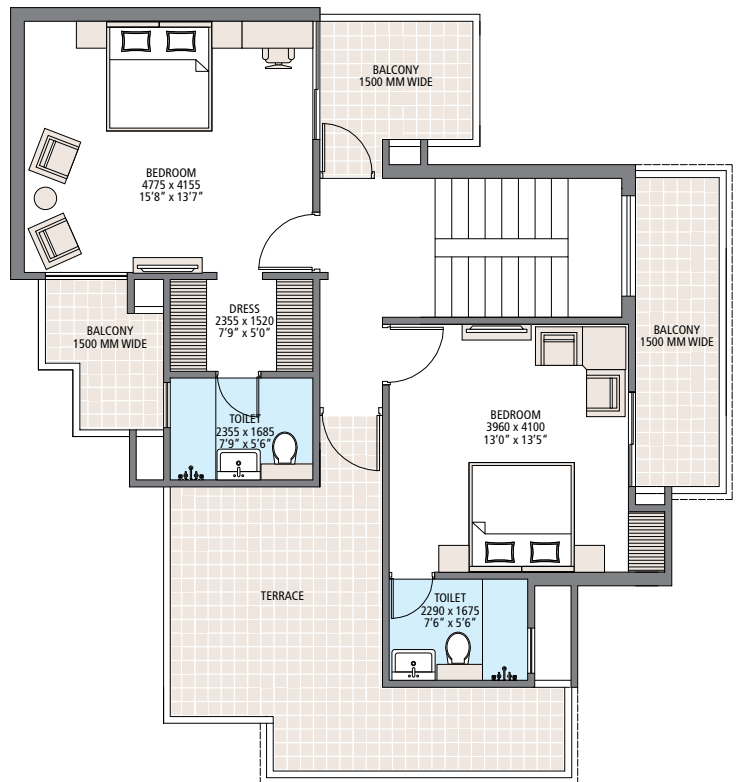
Floor Plan - Tower 1

Penthouse Unit (1801 & 1802)

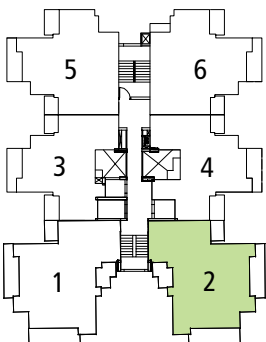
Carpet Area	869 Sq.Ft. + 688 Sq.Ft. = 1,556 Sq.Ft.
Built-up Area	938 Sq.Ft. + 758 Sq.Ft. = 1,696 Sq.Ft.
Balcony Area	248 Sq.Ft. + 134 Sq.Ft. = 382 Sq.Ft.
Extended Balcony	292 Sq.Ft.
Super Area	2,911 Sq.Ft.



Lower Level



Upper Level

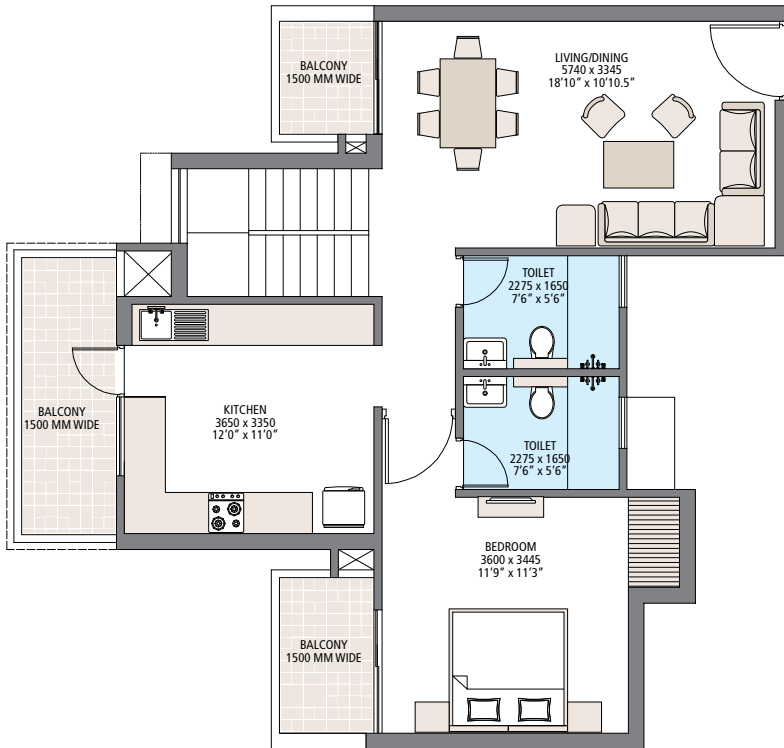


In the interest of maintaining high standards, all floor plans, layout plans, areas, dimensions and specifications are indicative and are subject to change as decided by the company or by any competent authority. Soft furnishing, cupboards, kitchen cabinets, furniture and gadgets are not part of the offering. 1 sq. metre = 1.196 sq. yard & 1 sq. metre = 10.76 sq. feet.

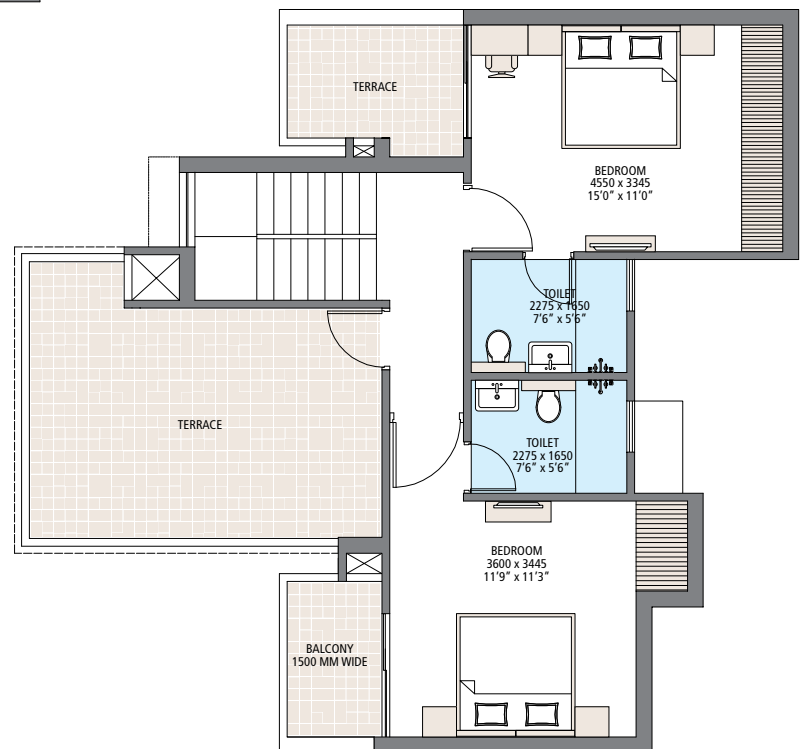
Floor Plan - Tower 1

Penthouse Unit (1803)

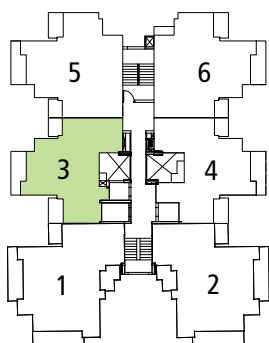
Carpet Area	687 Sq.Ft. + 521 Sq.Ft. = 1,207 Sq.Ft.
Built-up Area	761 Sq.Ft. + 588 Sq.Ft. = 1,348 Sq.Ft.
Balcony Area	134 Sq.Ft. + 39 Sq.Ft. = 173 Sq.Ft.
Extended Balcony	271 Sq.Ft.
Super Area	2,338 Sq.Ft.



Lower Level



Upper Level

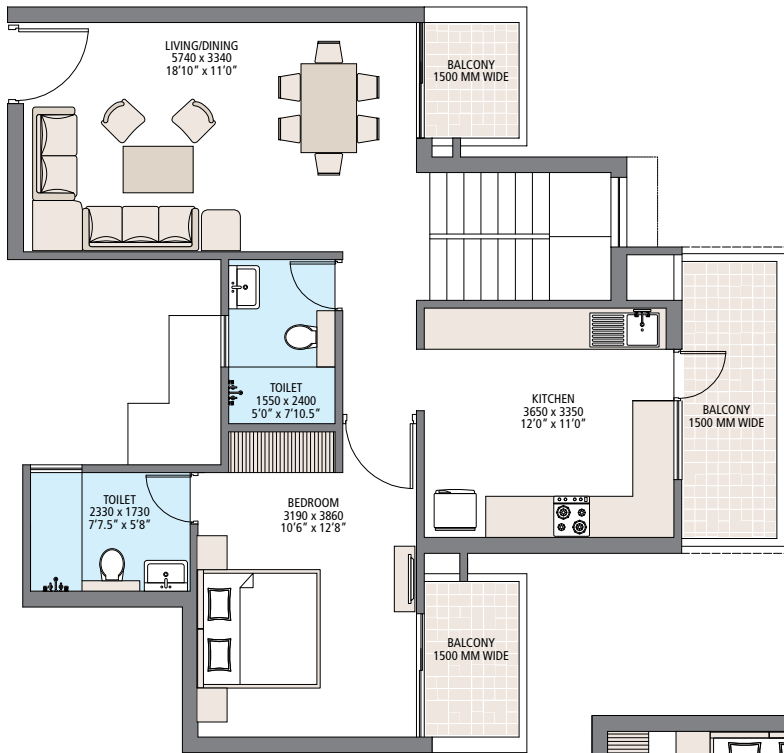


In the interest of maintaining high standards, all floor plans, layout plans, areas, dimensions and specifications are indicative and are subject to change as decided by the company or by any competent authority. Soft furnishing, cupboards, kitchen cabinets, furniture and gadgets are not part of the offering. 1 sq. metre = 1.196 sq. yard & 1 sq. metre = 10.76 sq. feet.

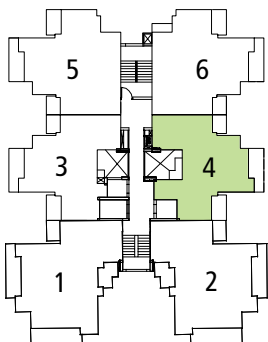
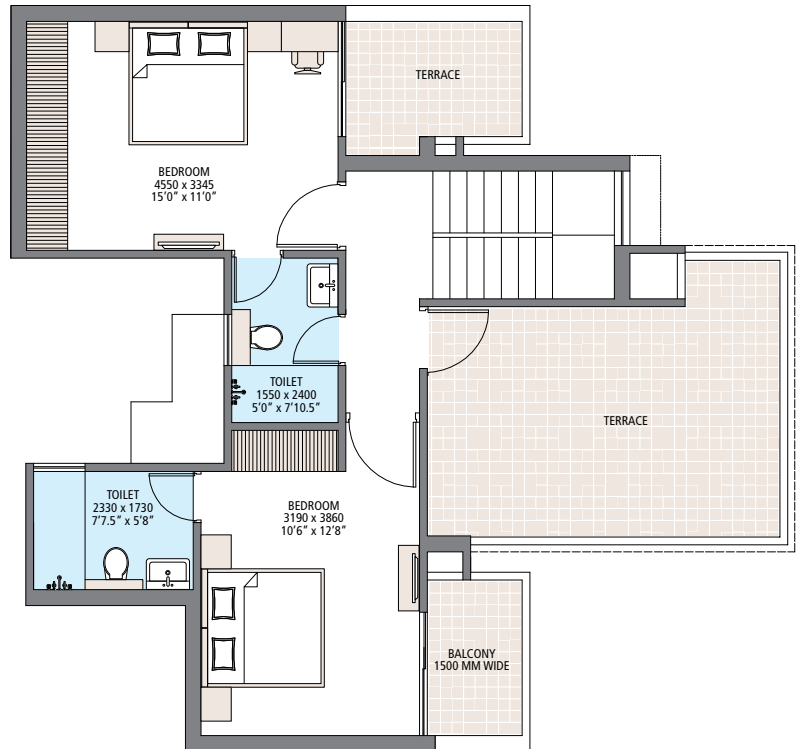
Floor Plan - Tower 1

Penthouse Unit (1804)

Carpet Area	680 Sq.Ft. + 518 Sq.Ft. = 1,198 Sq.Ft.
Built-up Area	761 Sq.Ft. + 588 Sq.Ft. = 1,349 Sq.Ft.
Balcony Area	134 Sq.Ft. + 39 Sq.Ft. = 173 Sq.Ft.
Extended Balcony	271 Sq.Ft.
Super Area	2,285 Sq.Ft.



Upper Level

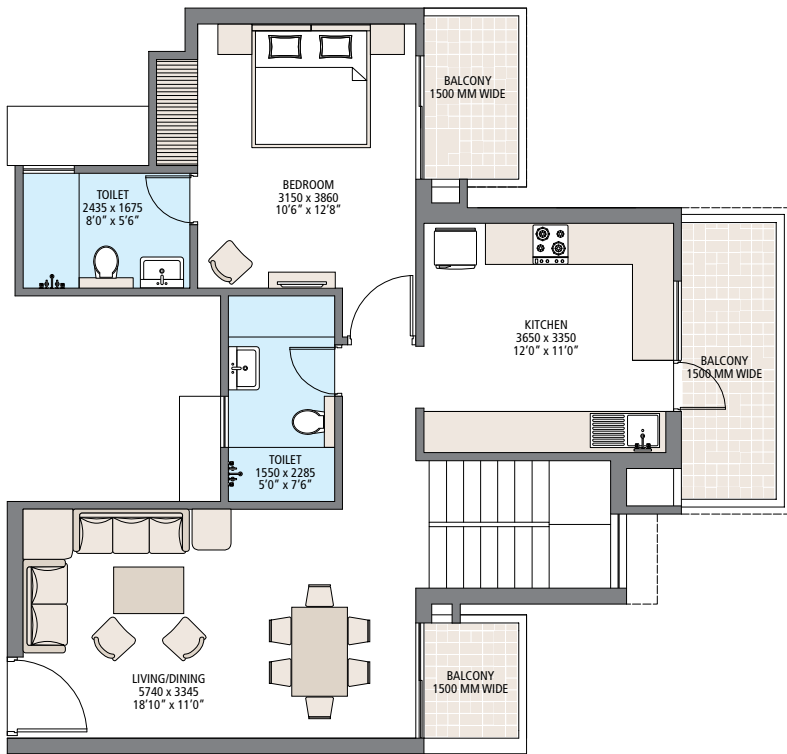


In the interest of maintaining high standards, all floor plans, layout plans, areas, dimensions and specifications are indicative and are subject to change as decided by the company or by any competent authority. Soft furnishing, cupboards, kitchen cabinets, furniture and gadgets are not part of the offering. 1 sq. metre = 1.196 sq. yard & 1 sq. metre = 10.76 sq. feet.

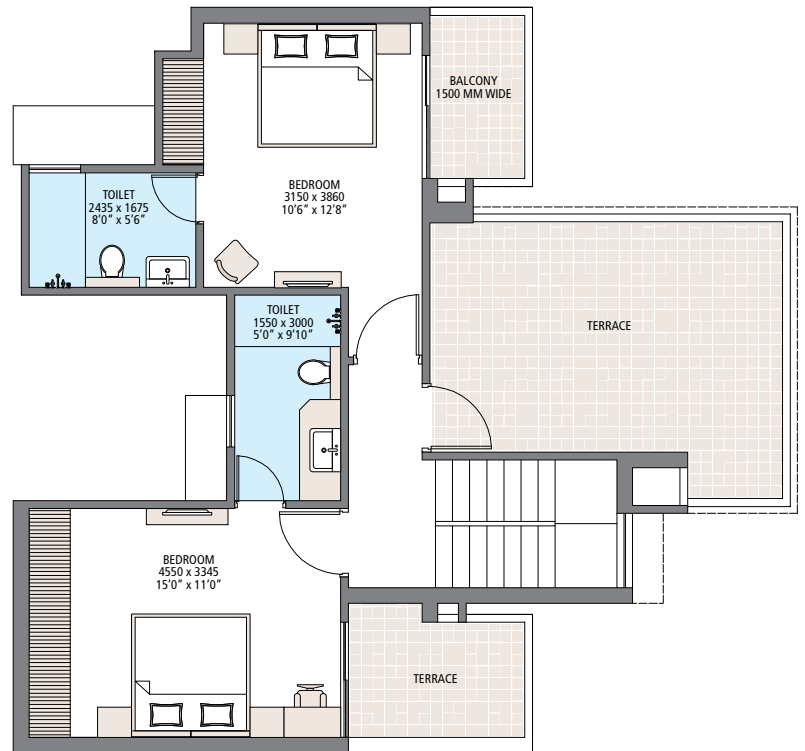
Floor Plan - Tower 1

Penthouse Unit (1805 & 1806)

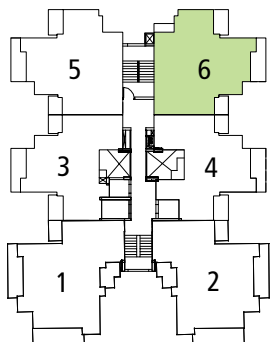
Carpet Area	691 Sq.Ft. + 525 Sq.Ft. = 1,217 Sq.Ft.
Built-up Area	779 Sq.Ft. + 606 Sq.Ft. = 1,385 Sq.Ft.
Balcony Area	135 Sq.Ft. + 39 Sq.Ft. = 174 Sq.Ft.
Extended Balcony	266 Sq.Ft.
Super Area	2,386 Sq.Ft.



Lower Level



Upper Level

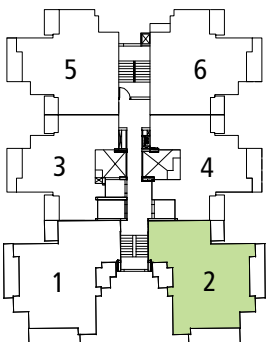
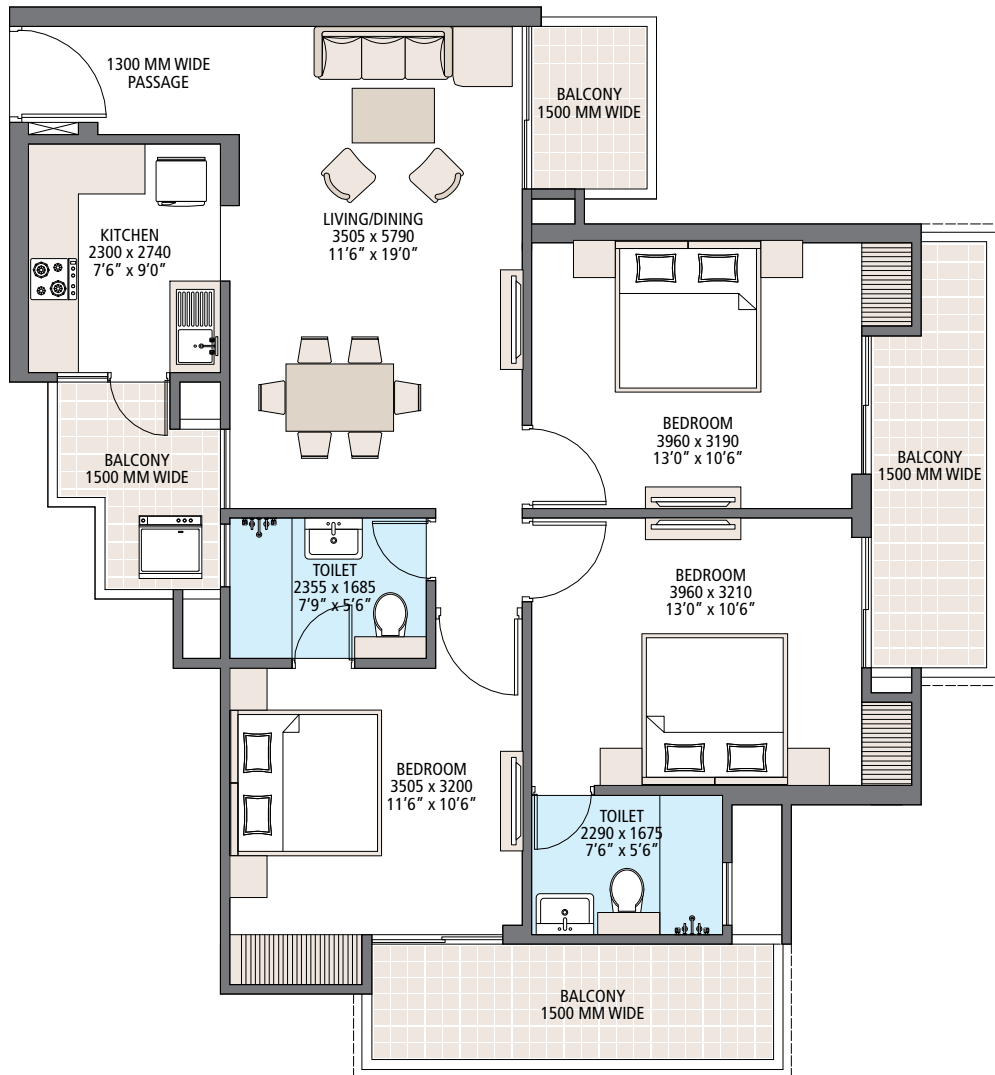


In the interest of maintaining high standards, all floor plans, layout plans, areas, dimensions and specifications are indicative and are subject to change as decided by the company or by any competent authority. Soft furnishing, cupboards, kitchen cabinets, furniture and gadgets are not part of the offering. 1 sq. metre = 1.196 sq. yard & 1 sq. metre = 10.76 sq. feet.

Floor Plan - Tower 1

3 BHK - Typical Unit (201 - 1501 & 202 - 1502)

Carpet Area	875 Sq.Ft.
Built-up Area	946 Sq.Ft.
Balcony Area	240 Sq.Ft.
Super Area	1,508 Sq.Ft.

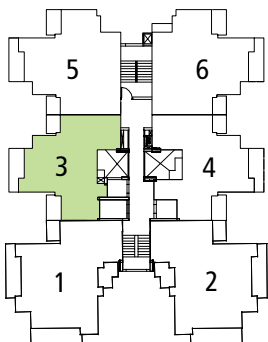
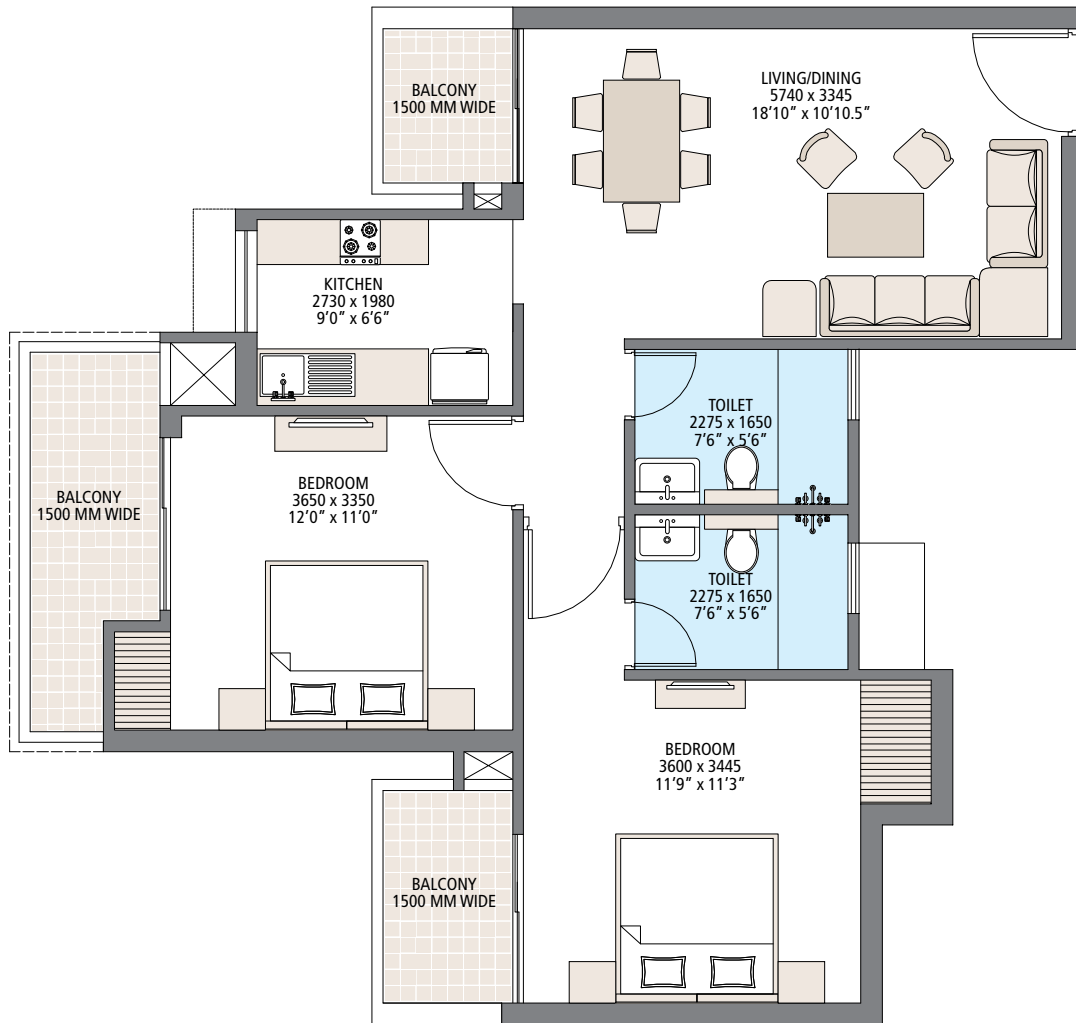


In the interest of maintaining high standards, all floor plans, layout plans, areas, dimensions and specifications are indicative and are subject to change as decided by the company or by any competent authority. Soft furnishing, cupboards, kitchen cabinets, furniture and gadgets are not part of the offering. 1 sq. metre = 1.196 sq. yard & 1 sq. metre = 10.76 sq. feet.

Floor Plan - Tower 1

2 BHK - Typical Unit (203 - 1503)

Carpet Area	693 Sq.Ft.
Built-up Area	770 Sq.Ft.
Balcony Area	126 Sq.Ft.
Super Area	1,216 Sq.Ft.

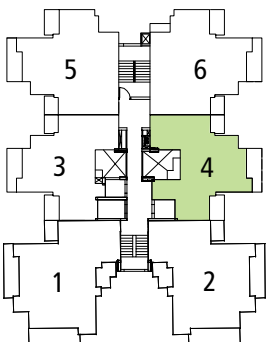
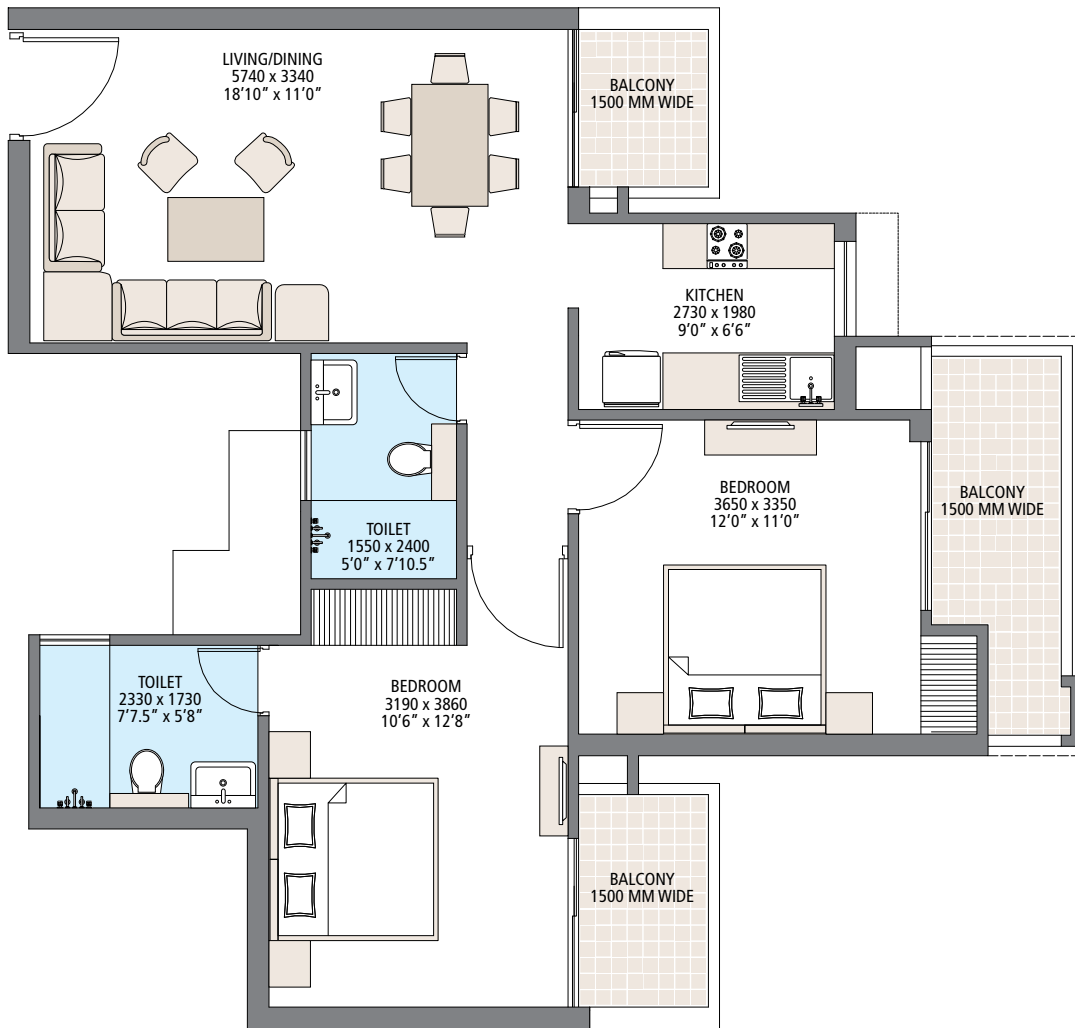


In the interest of maintaining high standards, all floor plans, layout plans, areas, dimensions and specifications are indicative and are subject to change as decided by the company or by any competent authority. Soft furnishing, cupboards, kitchen cabinets, furniture and gadgets are not part of the offering. 1 sq. metre = 1.196 sq. yard & 1 sq. metre = 10.76 sq. feet.

Floor Plan - Tower 1

2 BHK - Typical Unit (204 - 1504)

Carpet Area	687 Sq.Ft.
Built-up Area	770 Sq.Ft.
Balcony Area	126 Sq.Ft.
Super Area	1,221 Sq.Ft.

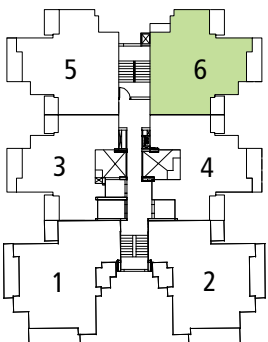
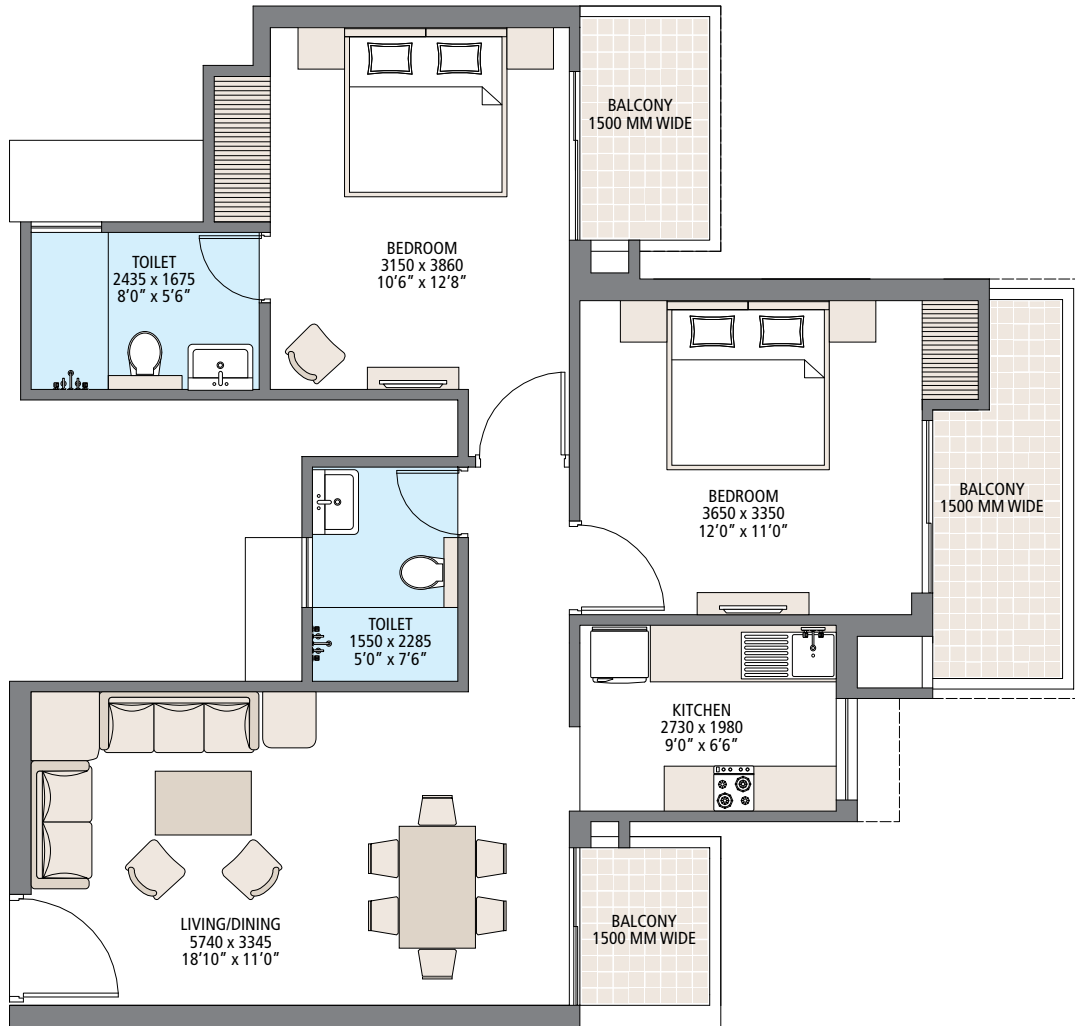


In the interest of maintaining high standards, all floor plans, layout plans, areas, dimensions and specifications are indicative and are subject to change as decided by the company or by any competent authority. Soft furnishing, cupboards, kitchen cabinets, furniture and gadgets are not part of the offering. 1 sq. metre = 1.196 sq. yard & 1 sq. metre = 10.76 sq. feet.

Floor Plan - Tower 1

2 BHK - Typical Unit (205 - 1505 & 206 - 1506)

Carpet Area	687 Sq.Ft.
Built-up Area	777 Sq.Ft.
Balcony Area	126 Sq.Ft.
Super Area	1,232 Sq.Ft.

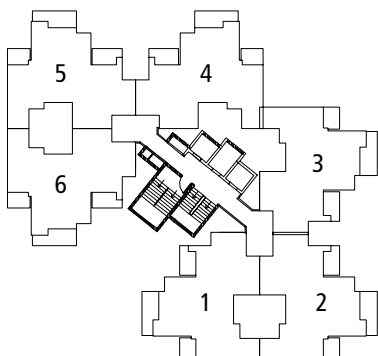
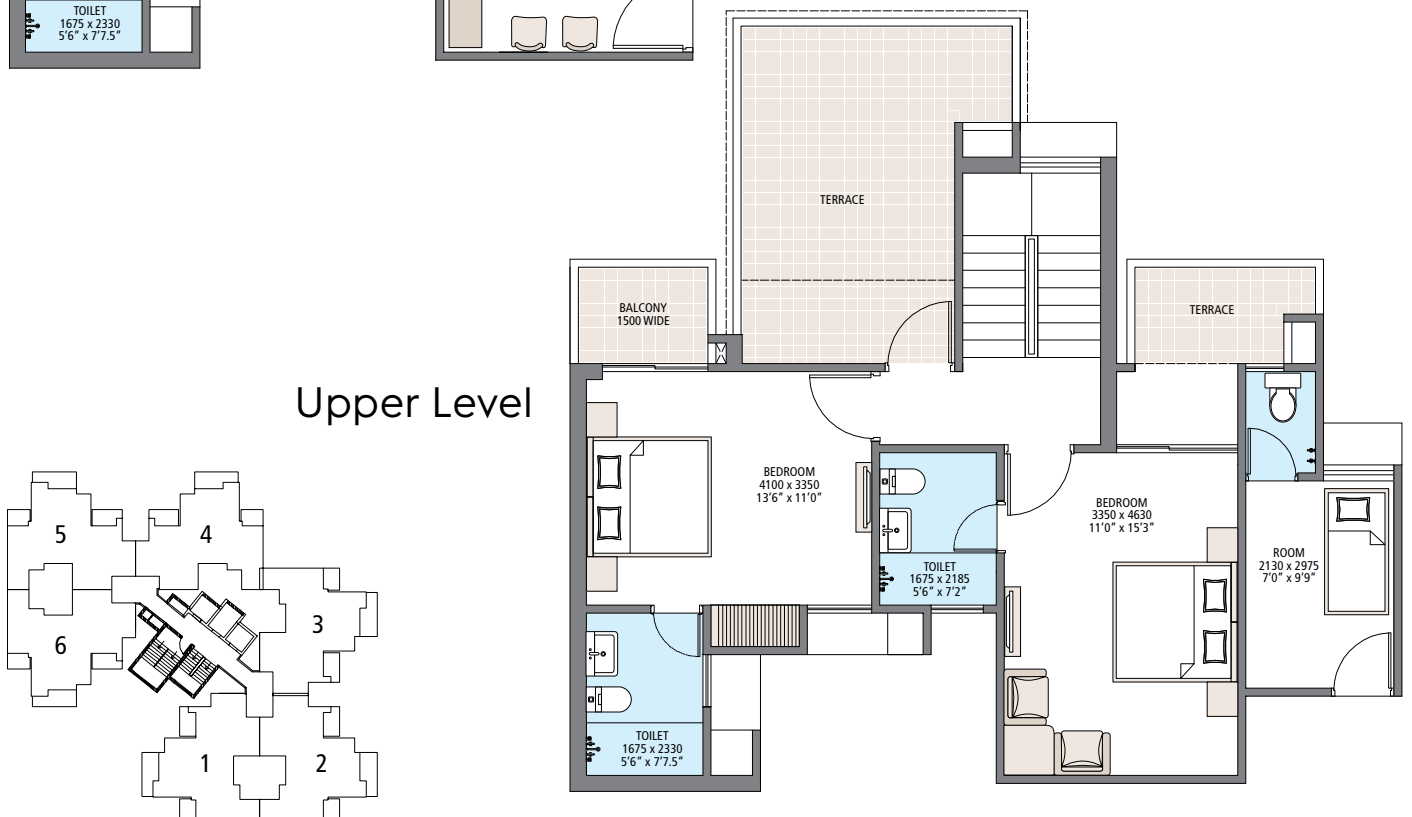
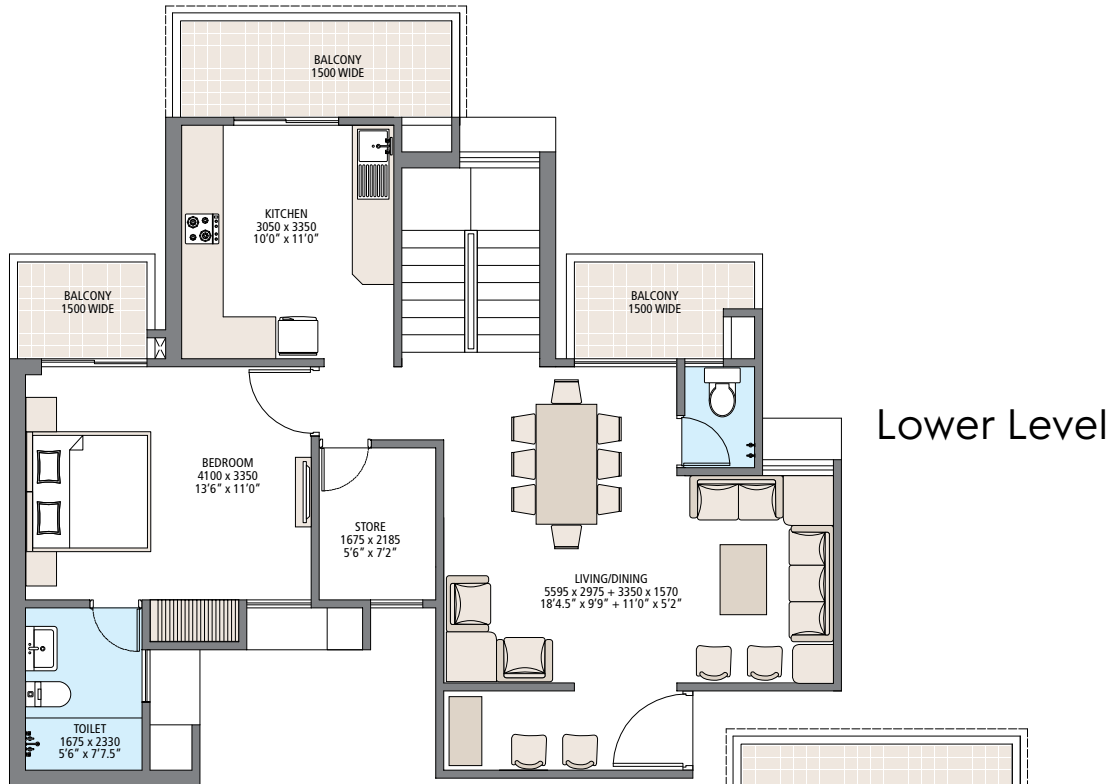


In the interest of maintaining high standards, all floor plans, layout plans, areas, dimensions and specifications are indicative and are subject to change as decided by the company or by any competent authority. Soft furnishing, cupboards, kitchen cabinets, furniture and gadgets are not part of the offering. 1 sq. metre = 1.196 sq. yard & 1 sq. metre = 10.76 sq. feet.

Floor Plan - Tower 2

Penthouse Unit (1801 to 1806)

Carpet Area	755 Sq.Ft. + 627 Sq.Ft. = 1,382 Sq.Ft.
Built-up Area	841 Sq.Ft. + 707 Sq.Ft. = 1,548 Sq.Ft.
Balcony Area	127 Sq.Ft. + 71 Sq.Ft. = 198 Sq.Ft.
Extended Balcony	188 Sq.Ft.
Super Area	2,549 Sq.Ft.



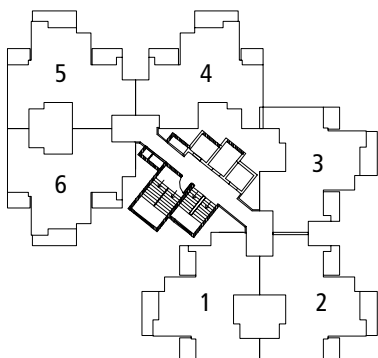
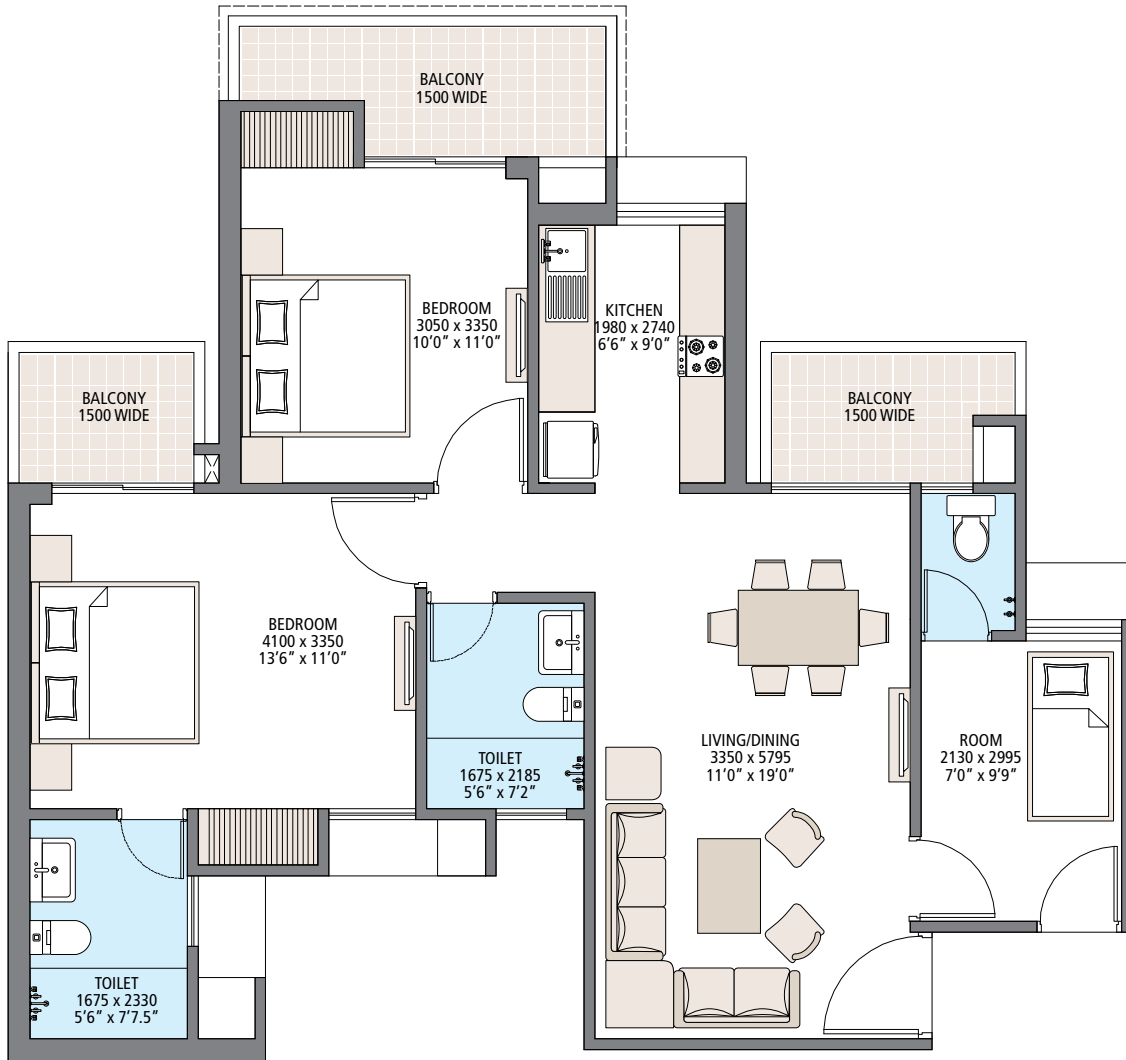
In the interest of maintaining high standards, all floor plans, layout plans, areas, dimensions and specifications are indicative and are subject to change as decided by the company or by any competent authority. Soft furnishing, cupboards, kitchen cabinets, furniture and gadgets are not part of the offering. 1 sq. metre = 1.196 sq. yard & 1 sq. metre = 10.76 sq. feet.

Floor Plan - Tower 2

2 BHK + Study - Typical Unit

(201 - 1701, 202 - 1702, 203 - 1703,
204 - 1704, 205 - 1705 & 206 - 1706)

Carpet Area	755 Sq.Ft.
Built-up Area	841 Sq.Ft.
Balcony Area	127 Sq.Ft.
Super Area	1,329 Sq.Ft.

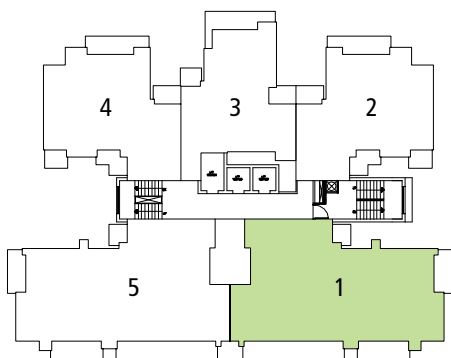
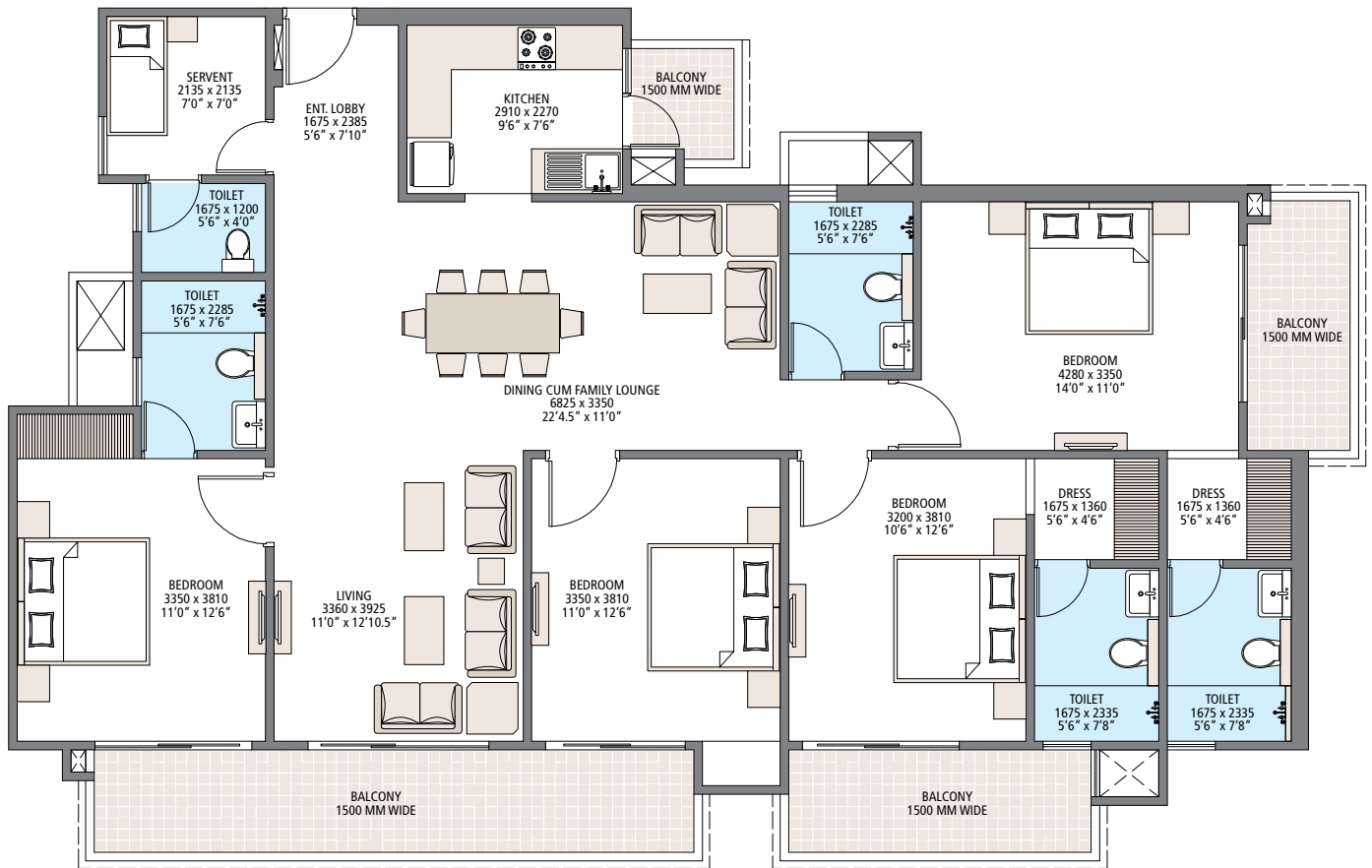


In the interest of maintaining high standards, all floor plans, layout plans, areas, dimensions and specifications are indicative and are subject to change as decided by the company or by any competent authority. Soft furnishing, cupboards, kitchen cabinets, furniture and gadgets are not part of the offering. 1 sq. metre = 1.196 sq. yard & 1 sq. metre = 10.76 sq. feet.

Floor Plan - Tower 3

4 BHK - Typical Unit (201 - 1901 & 305 - 1905)

Carpet Area	1,453 Sq.Ft.
Built-up Area	1,548 Sq.Ft.
Balcony Area	288 Sq.Ft.
Super Area	2,365 Sq.Ft.

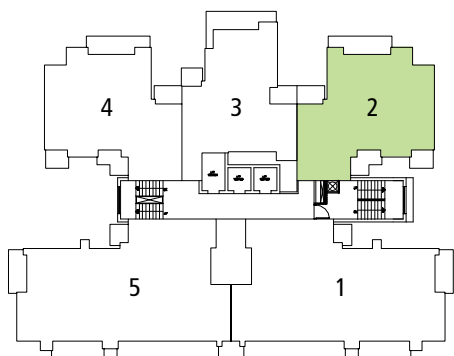
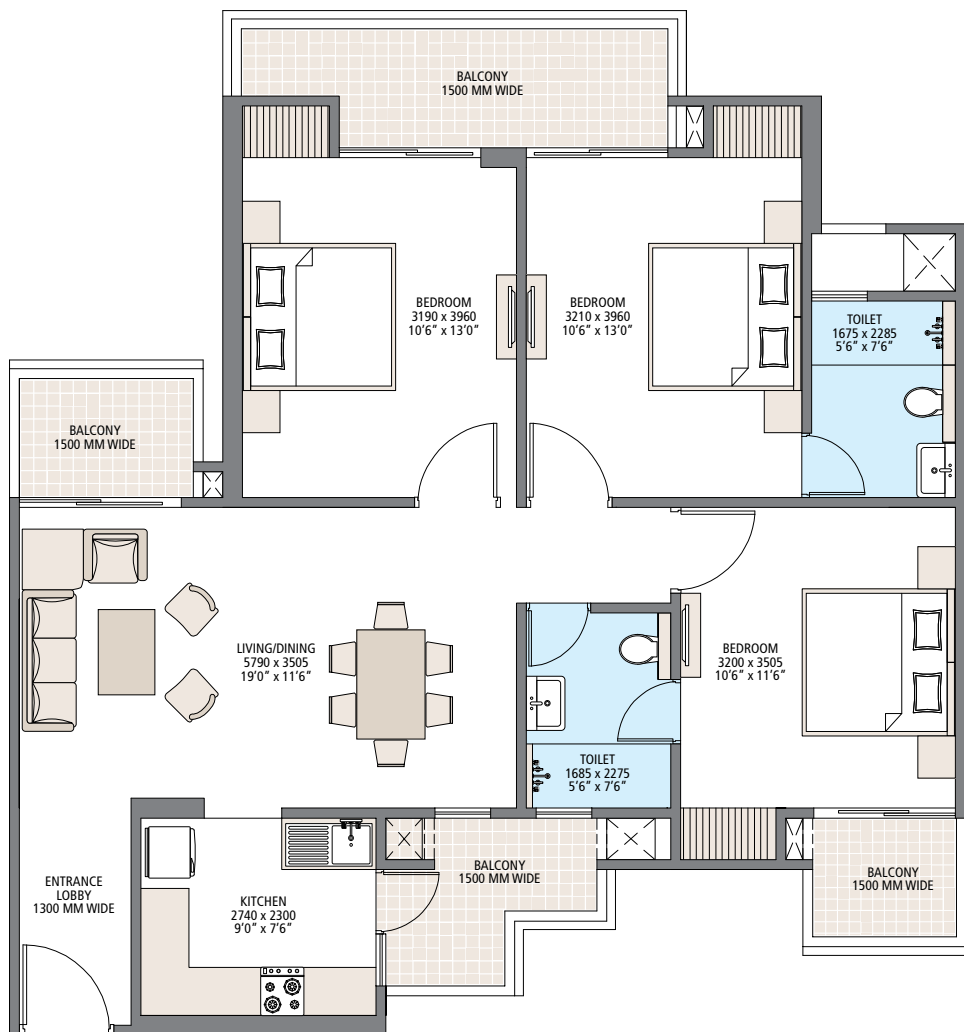


In the interest of maintaining high standards, all floor plans, layout plans, areas, dimensions and specifications are indicative and are subject to change as decided by the company or by any competent authority. Soft furnishing, cupboards, kitchen cabinets, furniture and gadgets are not part of the offering. 1 sq. metre = 1.196 sq. yard & 1 sq. metre = 10.76 sq. feet.

Floor Plan - Tower 3

3 BHK - Typical Unit (202 - 1902 & 304 - 1904)

Carpet Area	873 Sq.Ft.
Built-up Area	951 Sq.Ft.
Balcony Area	192 Sq.Ft.
Super Area	1,491 Sq.Ft.

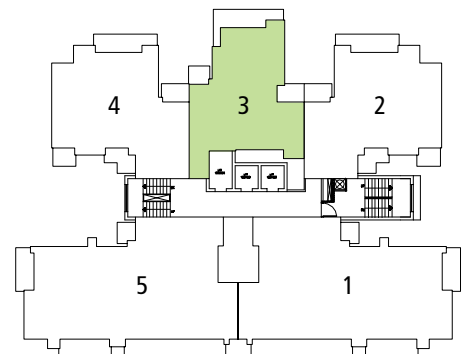
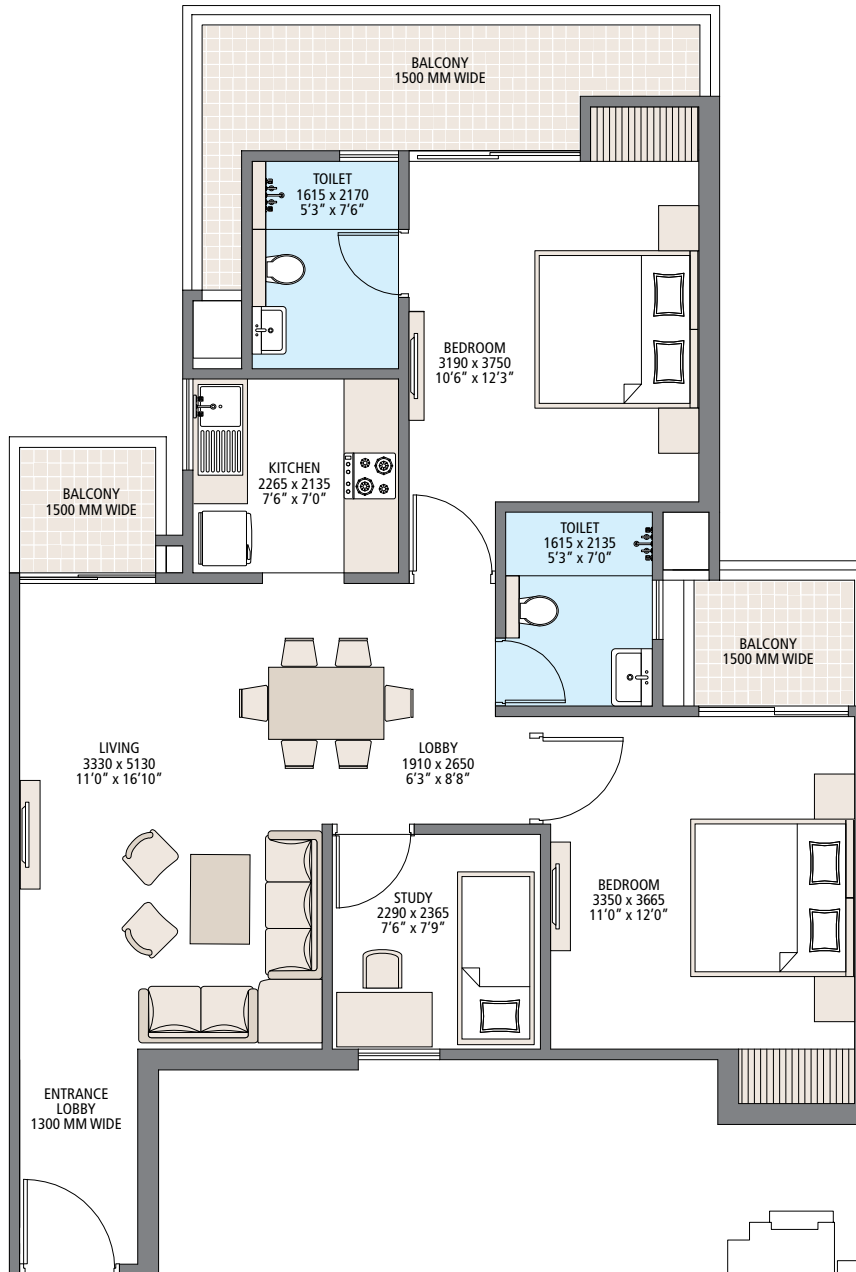


In the interest of maintaining high standards, all floor plans, layout plans, areas, dimensions and specifications are indicative and are subject to change as decided by the company or by any competent authority. Soft furnishing, cupboards, kitchen cabinets, furniture and gadgets are not part of the offering. 1 sq. metre = 1.196 sq. yard & 1 sq. metre = 10.76 sq. feet.

Floor Plan - Tower 3

2 BHK - Typical Unit (203 - 2103)

Carpet Area	779 Sq.Ft.
Built-up Area	855 Sq.Ft.
Balcony Area	146 Sq.Ft.
Super Area	1,339 Sq.Ft.

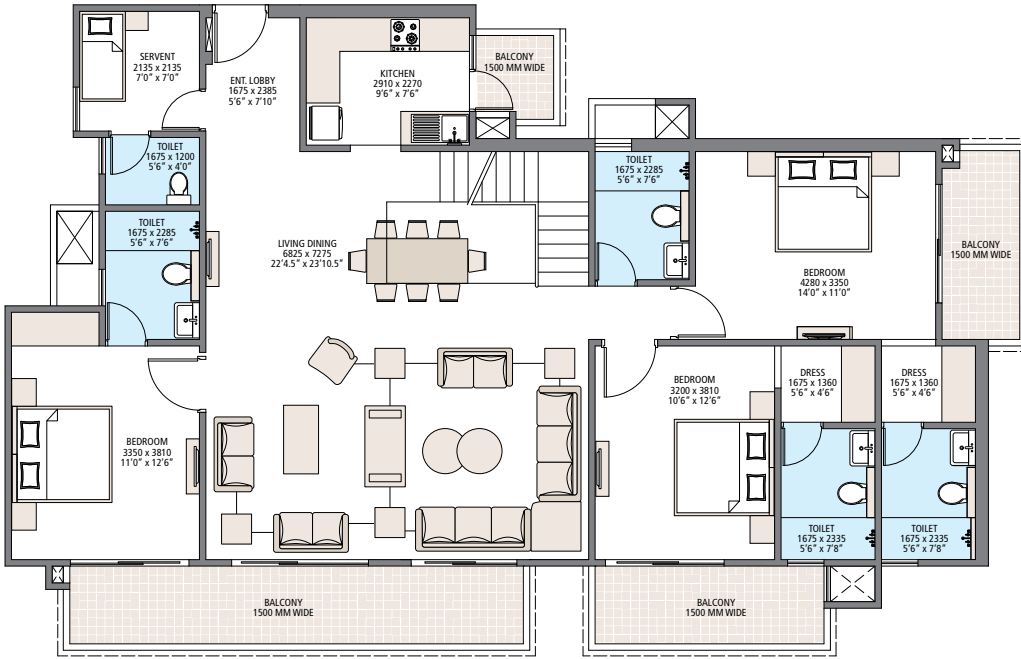


In the interest of maintaining high standards, all floor plans, layout plans, areas, dimensions and specifications are indicative and are subject to change as decided by the company or by any competent authority. Soft furnishing, cupboards, kitchen cabinets, furniture and gadgets are not part of the offering. 1 sq. metre = 1.196 sq. yard & 1 sq. metre = 10.76 sq. feet.

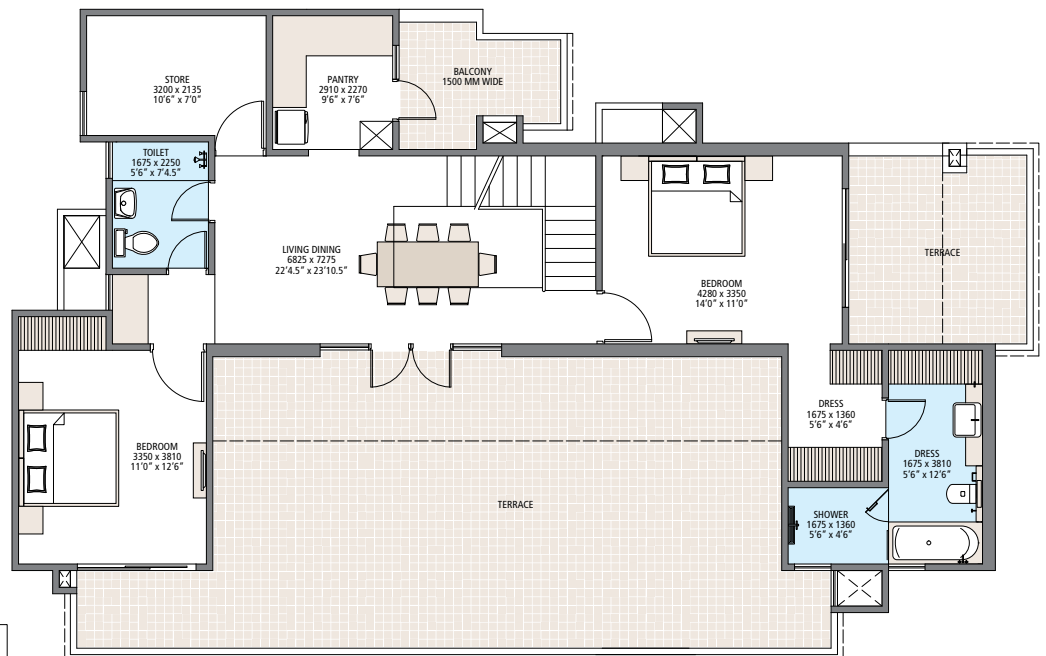
Floor Plan - Tower 3

Penthouse Unit (2001 & 2005)

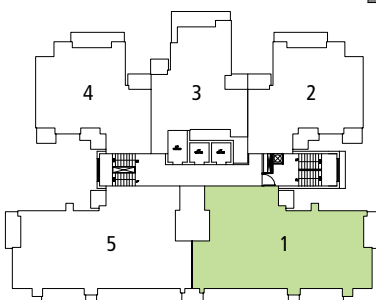
Carpet Area	1,455 Sq.Ft. + 904 Sq.Ft. = 2,431 Sq.Ft.
Built-up Area	1,544 Sq.Ft. + 1,011 Sq.Ft. = 2,631 Sq.Ft.
Balcony Area	283 Sq.Ft. + 265 Sq.Ft. = 522 Sq.Ft.
Extended Balcony	513 Sq.Ft.
Super Area	4,347 Sq.Ft.



Lower Level



Upper Level

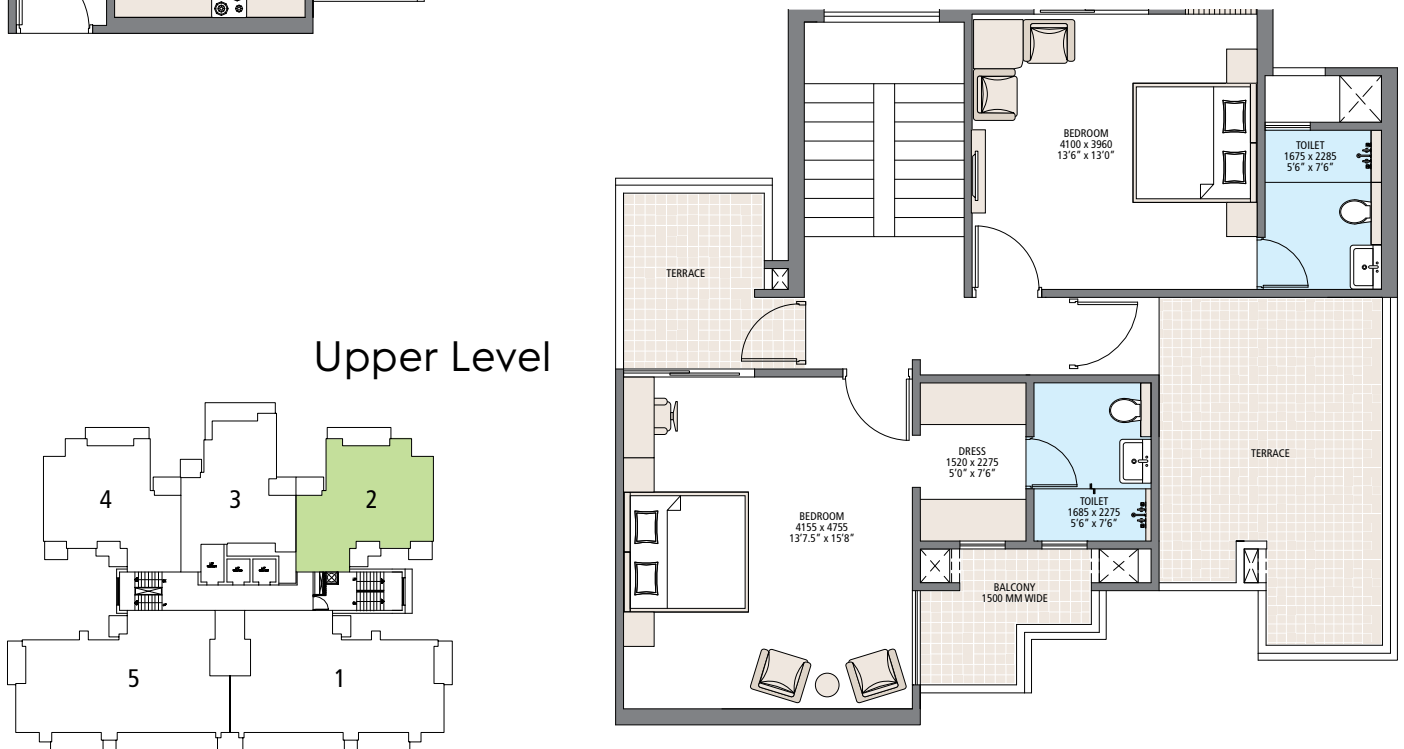
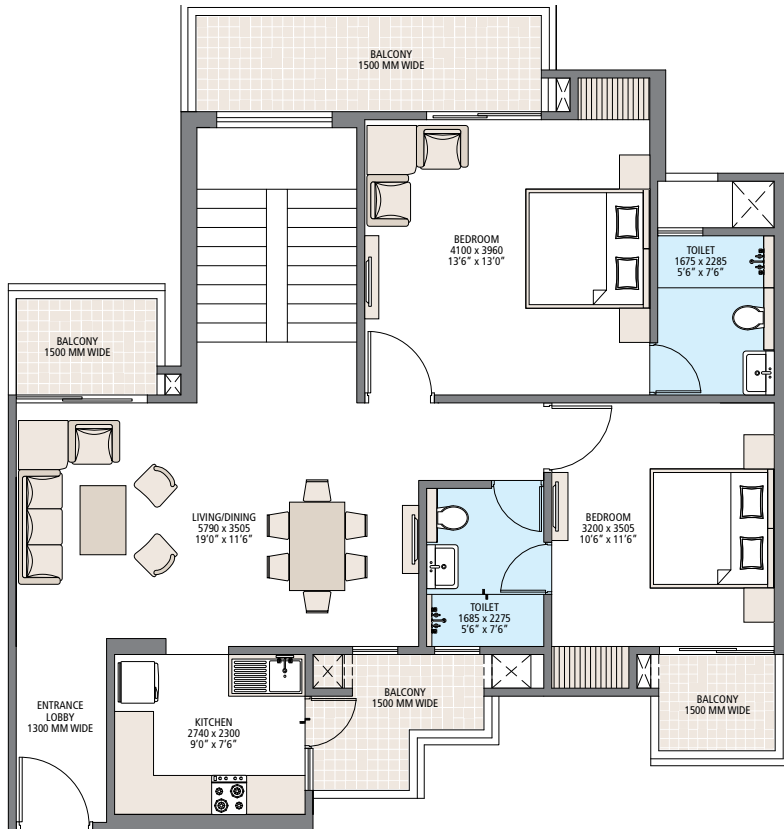


In the interest of maintaining high standards, all floor plans, layout plans, areas, dimensions and specifications are indicative and are subject to change as decided by the company or by any competent authority. Soft furnishing, cupboards, kitchen cabinets, furniture and gadgets are not part of the offering. 1 sq. metre = 1.196 sq. yard & 1 sq. metre = 10.76 sq. feet.

Floor Plan - Tower 3

Penthouse Unit (2002 & 2004)

Carpet Area	863 Sq.Ft. + 697 Sq.Ft. = 1,559 Sq.Ft.
Built-up Area	941 Sq.Ft. + 768 Sq.Ft. = 1,712 Sq.Ft.
Balcony Area	201 Sq.Ft. + 199 Sq.Ft. = 400 Sq.Ft.
Extended Balcony	175 Sq.Ft.
Super Area	2,873 Sq.Ft.



In the interest of maintaining high standards, all floor plans, layout plans, areas, dimensions and specifications are indicative and are subject to change as decided by the company or by any competent authority. Soft furnishing, cupboards, kitchen cabinets, furniture and gadgets are not part of the offering. 1 sq. metre = 1.196 sq. yard & 1 sq. metre = 10.76 sq. feet.